

**STANDARD ARRIVAL  
CHART - ICAO  
INSTRUMENT  
(STAR)**

TRANSITIONAL ALTITUDE  
**8000'**  
TRANSITIONAL LEVEL  
**ATC**

APP: 128.20  
TWR: 118.90  
APN: 122.65  
ATIS: 126.225

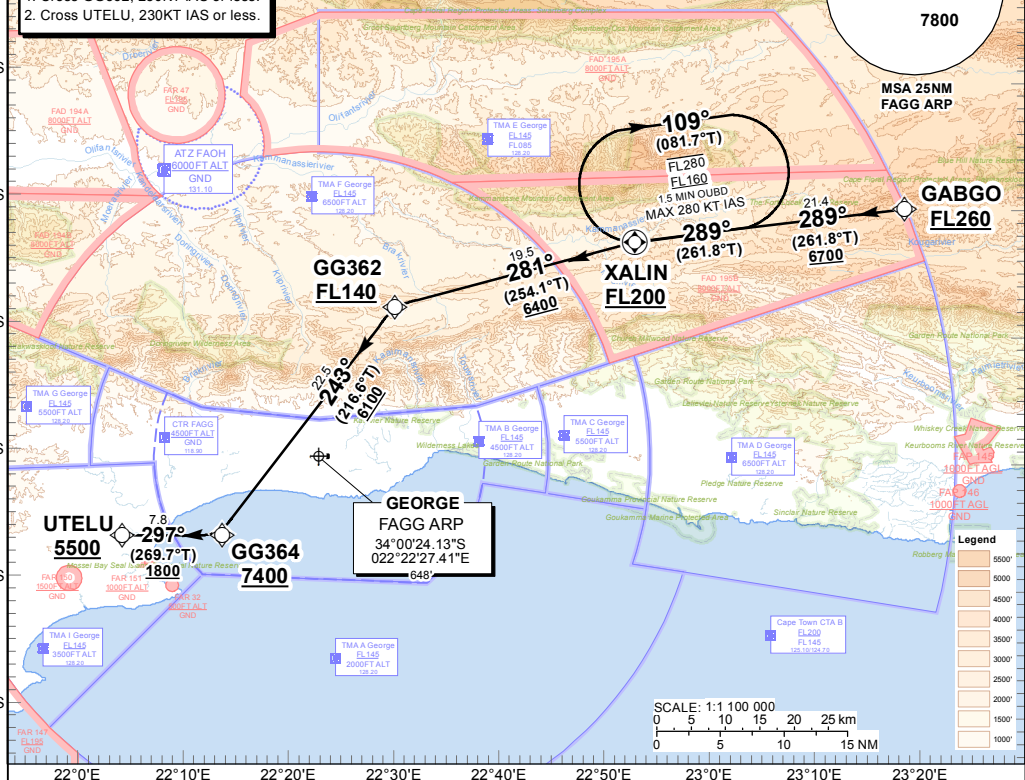
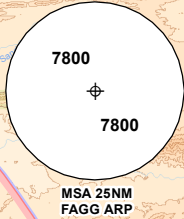
**GEORGE  
RNAV (GNSS) RWY 11  
GABGO 1A**

**ELEV, ALT & HGT IN FEET**  
DIST IN NM  
BRG ARE MAG  
VAR 27°W (2017)

**SPEED RESTRICTION**  
1. Cross GG362, 250KT IAS or less.  
2. Cross UTELU, 230KT IAS or less.

**NOTE**  
1. If unable to comply with SID or STAR, notify ATC.  
2. SIDs and STARs only in force when Surveillance Radar is in operation.  
3. General Aviation Traffic operates below TMA I up to 3000' ALT and TMA B up to 4000' ALT and is considered separated from traffic operation in this TMA.

**RNAV 1 REQUIRED**



**GABGO 1A:  
RWY 11**

Leave GABGO for XALIN. At XALIN, continue to GG362. At GG362 turn left to GG364. At GG364, turn right to UTELU. At UTELU, continue on the RNAV (GNSS) APCH RWY 11 or establish on the ILS LOC RWY 11. Request RADAR vectors if required.

**COMMUNICATION FAILURE PROCEDURE (Squawk 7600)**

**Before GABGO:** Proceed to GABGO, then to XALIN and enter the XALIN RNAV (GNSS) hold. Hold at last assigned level for minimum 5 MIN, at or above FL160.  
Leave XALIN on the "After GABGO" Communication Failure Procedure.

**After GABGO:** Continue on the GABGO 1A RNAV (GNSS) STAR to UTELU. At UTELU continue on the RNAV (GNSS) APCH RWY 11 or establish on the ILS LOC RWY 11 and land.

CHANGE: NEW Procedure